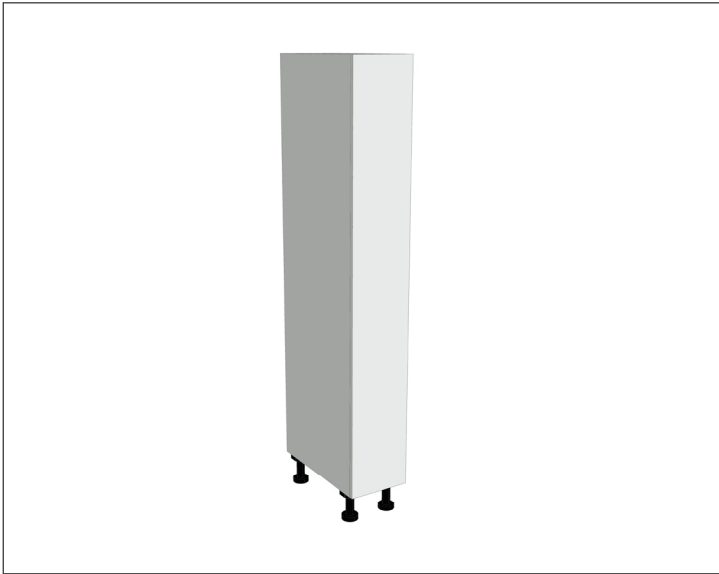


# SPECIFICATION SHEET

## 1 Door Left Hinge Pantry Cabinet

Code: MK152L



### Features

- 1 Door Left Hinge Pantry Cabinet
- Cabinet Designed for Handle
- 1 Fixed Shelf, 4 Adjustable Shelves
- Laminate Woodgrain & Solid Colours on MR Board
- **Default Dimensions** (as pictured):  
W300 x H2100 x D590

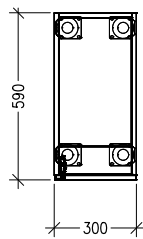
#### Variable Dimensions:

Width: 300-600mm  
Height: 1800-2400mm  
Depth: 520-650mm

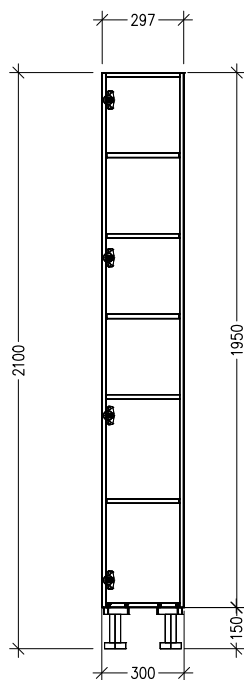
*Note: For measurements outside the variable dimensions, please contact us.*

### Technical Details

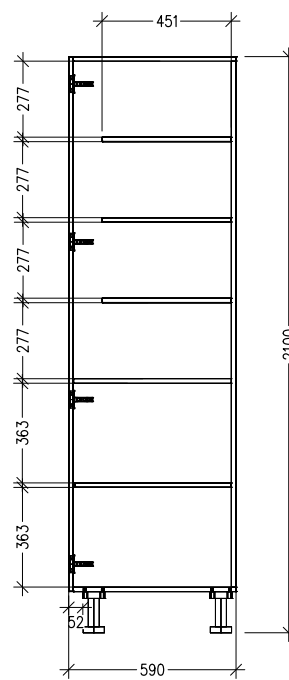
Note: All measurements shown are in millimetres. Sizes are nominal.



TOP VIEW



FRONT VIEW



SIDE VIEW



Head Office: 30 Mill Road, Whanganui  
0800 122 522 | sales@smartcab.co.nz  
[www.smartcab.co.nz](http://www.smartcab.co.nz)