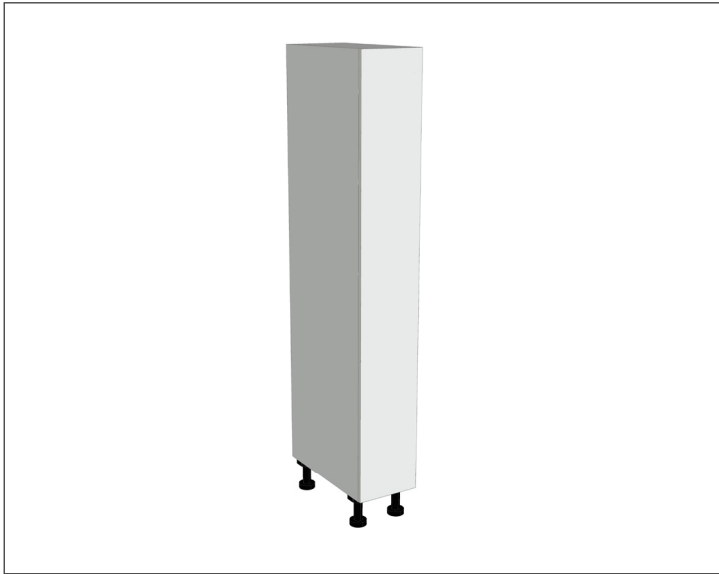


SPECIFICATION SHEET

1 Door Right Hinge Push-to-Open Pantry Cabinet

Code: MK154R



Features

- 1 Door Right Hinge Push-to-Open Pantry Cabinet
- 1 Fixed Shelf, 4 Adjustable Shelves
- Laminate Woodgrain & Solid Colours on MR Board
- **Default Dimensions** (as pictured):
W300 x H2100 x D590

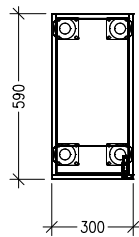
Variable Dimensions:

Width: 300-600mm
Height: 1800-2400mm
Depth: 520-650mm

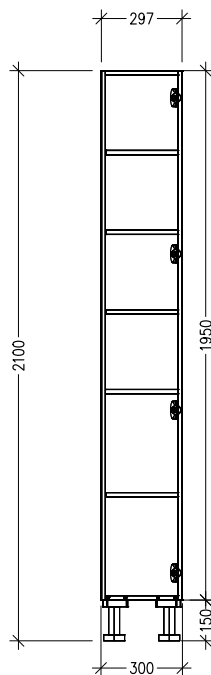
Note: For measurements outside the variable dimensions, please contact us.

Technical Details

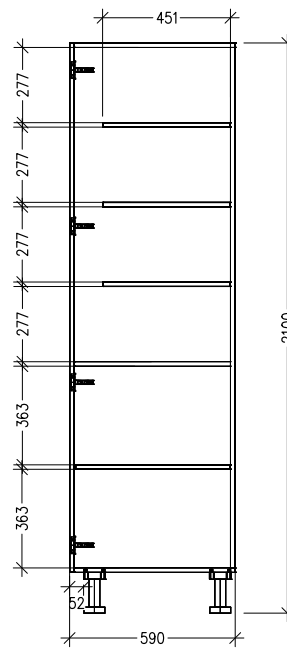
Note: All measurements shown are in millimetres. Sizes are nominal.



TOP VIEW



FRONT VIEW



SIDE VIEW



Head Office: 30 Mill Road, Whanganui
0800 122 522 | sales@smartcab.co.nz
www.smartcab.co.nz