

SPECIFICATION SHEET

2 Door, 3 Drawer Pantry Cabinet

Code: MK136-CHN



Features

- 4 Door Pantry Tall Cabinet
- Tall Cabinet Designed for Handles
- 3 Equal Height Drawers
- 1 Fixed Shelf, 2 Adjustable Shelves
- Laminate Woodgrain & Solid Colours on MR Board
- **Default Dimensions** (as pictured):
W600 x H2100 x D590

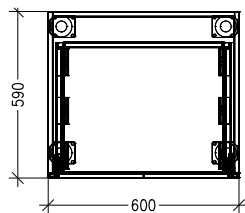
Variable Dimensions:

Width: 600-1000mm
Height: 1800-2400mm
Depth: 520-650mm

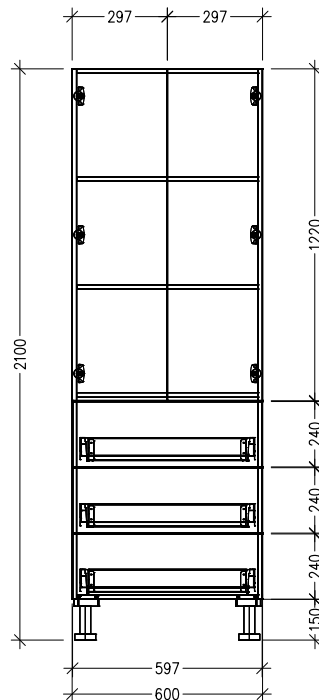
Note: For measurements outside the variable dimensions, please contact us.

Technical Details

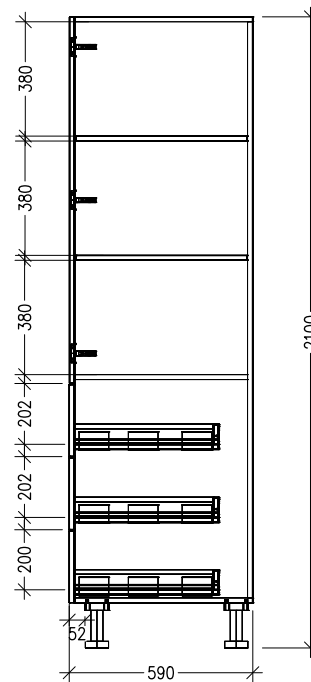
Note: All measurements shown are in millimetres. Sizes are nominal.



TOP VIEW



FRONT VIEW



SIDE VIEW



Head Office: 30 Mill Road, Whanganui
0800 122 522 | sales@smartcab.co.nz
www.smartcab.co.nz