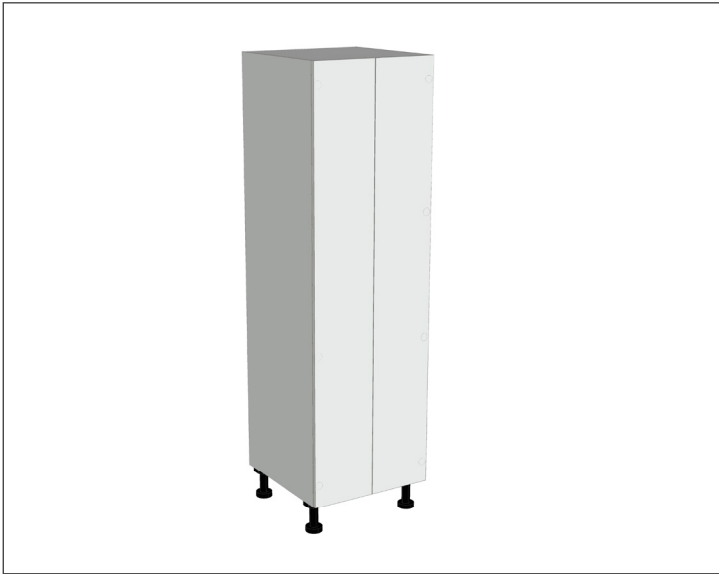


SPECIFICATION SHEET

2 Door Pantry Cabinet

Code: MK148



Features

- 2 Door Pantry Cabinet
- Cabinet Designed for Handle
- 1 Fixed Shelf, 4 Adjustable Shelves
- Laminate Woodgrain & Solid Colours on MR Board
- **Default Dimensions** (as pictured):
W600 x H2100 x D590

Variable Dimensions:

Width: 600-1000mm

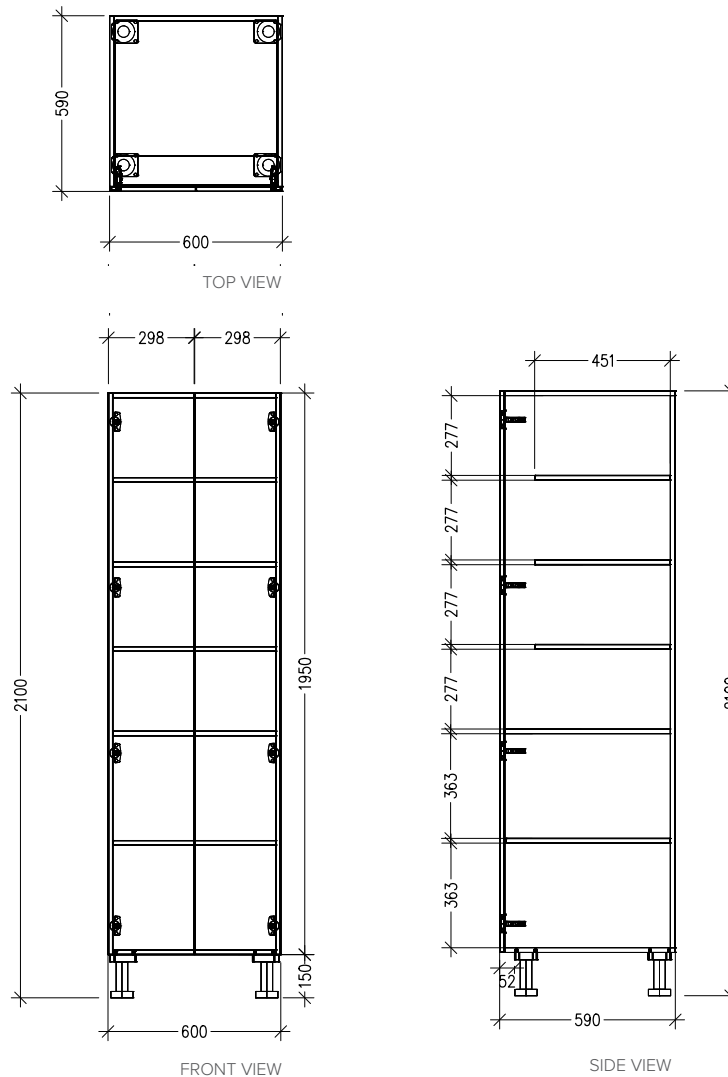
Height: 1800-2400mm

Depth: 520-650mm

Note: For measurements outside the variable dimensions, please contact us.

Technical Details

Note: All measurements shown are in millimetres. Sizes are nominal.



Head Office: 30 Mill Road, Whanganui
0800 122 522 | sales@smartcab.co.nz
www.smartcab.co.nz